

Western Australian Rogaining Association

The R & B Shuffle

WARA 6 Hour Rogaine

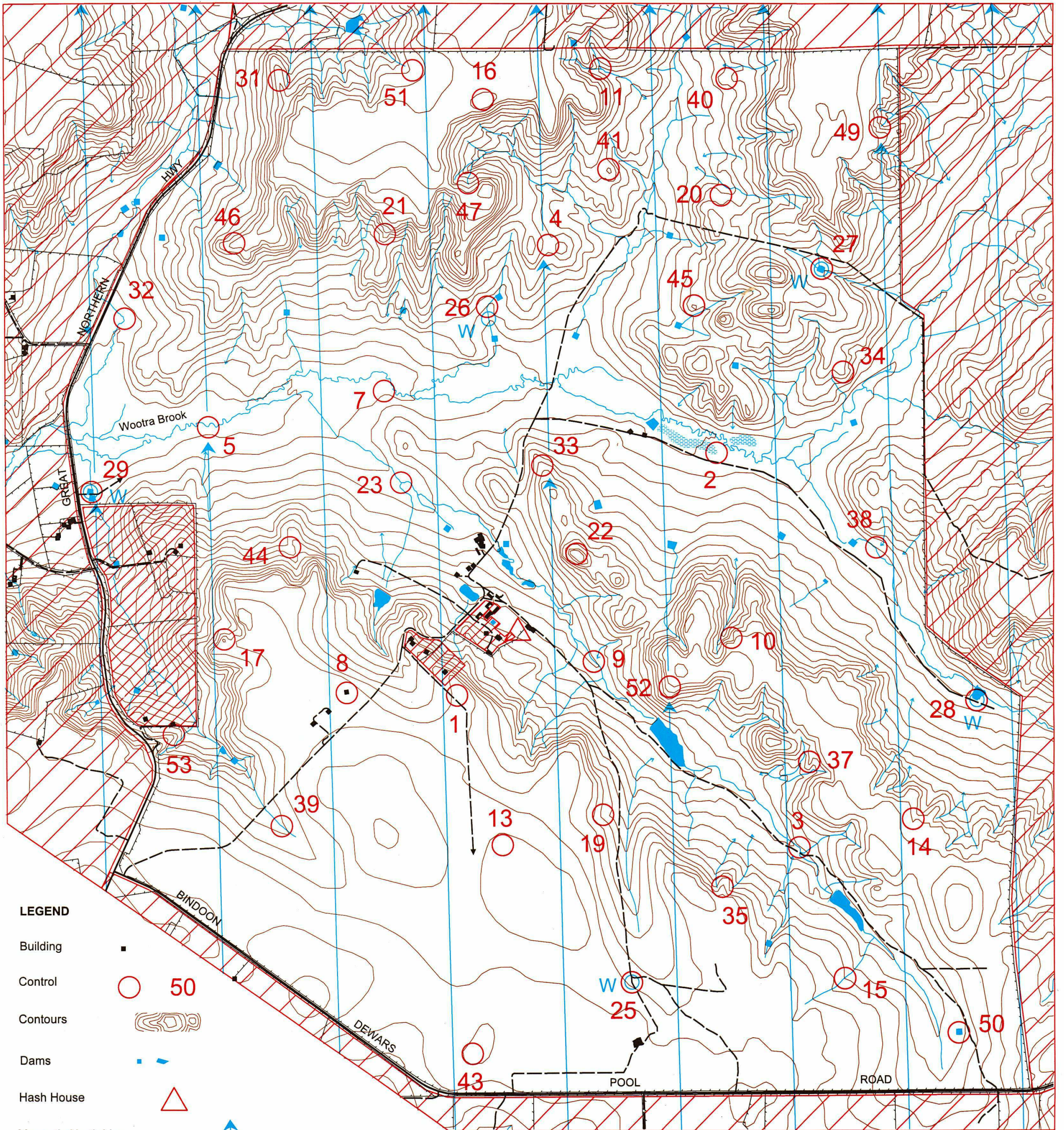
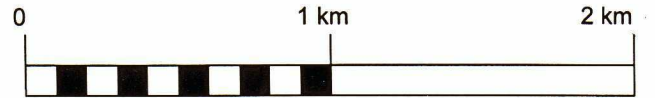
23rd March 2002



Government of Western Australia

Department of Sport and Recreation

SCALE 1:25,000, 5 metre contour interval



LEGEND

- Building
- Control 50
- Contours
- Dams
- Hash House
- Magnetic North Line
- Out of Bounds
- Road, Bitumen
- Track, Gravel

- Swampland
- Boundary Fence
- Watercourse
- Water Drops W

This map was produced using OCAD. Data supplied by DOLA and used under copy licence 393/93. Possession of this map does not give right of entry to this area.

SETTERS
Bryan McClintock
Ricky Thackray

Special thanks to the Catholic Agricultural College for land access permission, camping area, and assistance with event planning.

VETTERS
Chip Lundstrom
John Supanz

The R & B Shuffle : WARA 6 Hour Rogaine : 23rd March 2002

No.	Description	Points	No.	Description	Points	Important Information
1	A water tank	20	31	A saddle	70	Control Cards From 1430 Saturday Briefing 1445 Saturday Start 1500 Saturday Finish 2100 Saturday Food available for sale from 1800-2200 Sunset 1824 Moonrise 1433 Saturday Moonset 0048 Sunday Late Penalty 10 points per minute or part thereof Controls Used 45 Total Points 2700
2	A clearing (swamp), eastern end	20	32	The watercourse, bend	70	
3	The western watercourse, bend	20	33	The spur	70	
4	The saddle	20	34	The spur	70	
5	The watercourse, southern bend	20	35	The spur	70	
7	A fence corner	30	37	A small knoll	80	
8	A shed	30	38	A watercourse junction	80	
9	A track/watercourse crossing	30	39	The broad gully - Meckering fault line	80	
10	The gully	30	40	The broad spur	80	
11	The watercourse junction	30	41	The knoll	80	
13	A fence junction	40	43	The broad knoll	90	
14	The gully, head of	40	44	The gully	90	
15	The broad gully	40	45	The knoll	90	
16	The broad knoll	40	46	The spur	90	
17	The knoll - nice view	40	47	The watercourse	90	
19	The gully	50	49	The southeastern gully, head of	100	
20	The shallow gully	50	50	The small billabong, southeastern corner	100	
21	The spur	50	51	The broad gully	100	
22	The summit - enjoy the scenery	50	52	The broad spur	100	
23	The watercourse junction	50	53	The spur	100	
25	A track/fence junction, southwest side	60	Water Drops: At controls 25,27,28,29			
26	The gully, bend	60	South of control 26, at a fence/gully crossing			
27	The dam, eastern side	60	Patrolled Roads: Please check the map table for patrolled roads			
28	The dam, southern side	60	The following is intended as a guide:			
29	The northern dam, north side	60	Great Northern Hwy; Entrance track; Track to control 27;			
			Track to control 28; Track to control 25; Track to control 50.			